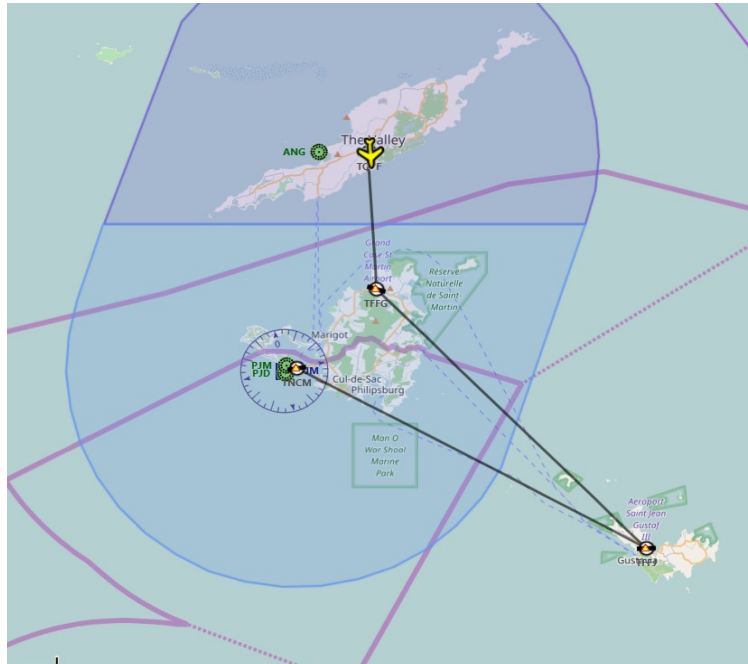


The **CIX** VFR Club

Christmas Caper – 2017

The Twelve Days of CiXmas

On the Third Day of CiXmas.....



....we are looking forward to the day's flying as we are going into St. Barthelmy <gulp> and then on to Princess Juliana airport. But before that, we are paying a call on Grand Case airstrip. Our second stop will be at the famous St Barthelmy airport where we will do CiX Club proud with our superb approach & landing! After that, we shall head on over to Princess Juliana airport, where the photographers will be eager to capture our approach & landing.

Princess Juliana International Airport is the main airport on the Caribbean island of Saint Martin, located on the Dutch side of the island. In 2010, the airport handled 1,645,105 passengers and 60,870 aircraft movements. The airport serves as a hub for Windward Island Airways and is the major gateway for the smaller Leeward Islands, including Anguilla, Saba, St. Barthelmy and St Eustatius. It is named after Juliana of the Netherlands, who, as Crown Princess, landed here in 1944, the year after the airport opened.

The airport is perhaps best known for very low-altitude flyover landing & approaches due to one end of its runway being extremely close to the shore and Maho Beach.

The Route

Leg 1	TQPF (Wallblake) to TFFG (Grand Case)	6 nms
Leg 2	TFFG (Grand Case) to TFFJ (St Barthelmy Island)	17 nms
Leg 3	TFFJ (St Barthelmy Island) to Princess Juliana International (TNCM)	17 nms

This days flying is only 40 nms and flying time at 140 kts should be a paltry 17 minutes. But as usual, with the turnarounds, re-filing of flight plans and other necessary actions, the day's trip will take a little longer.